



2022
SDGs Report

KAMPHAENG PHET RAJABHAT UNIVERSITY



“Kamphaeng Phet Rajabhat University strives to become an institution for lifelong learning”

The Royal Gazette assigns Kamphaeng Phet Rajabhat University as a university for local sustainable development. It empowers and strengthens the local communities by giving variety of free academic services, and outreach educational projects and activities using academic expertise and resources. The university vows to produce bodies of new knowledge and innovation based on quality research, offer innovatively designed undergraduate and post courses to produce high quality workforces that serve the needs of the local communities and the wider public.

During 2022, KPRU has been working to achieve the university’s philosophy as “a provider of affordable and accessible educational opportunities to all; a power source of wisdom for regional development; and a producer of graduates who are equipped with knowledge, skills, and morals that will contribute to the development of the community, region and country”.

The university is committed to supporting and making SDGs a part of the university’s operation. For the 2022 fiscal year, over 29 million Thai Baht (799 thousand US Dollars) was spent on projects supporting the local development. One of our key successes to SDGs is SDGs education; everyone in the university has to know SDGs and create projects, activities, and educational facilities that support the goals.

The report presents how the university has worked in the past year in response to the 17 SDGs. Brief summaries of policies, plans, projects, and activities that contributed to the SDGs are provided to highlight what we have done to achieve the global goals.

KPRU



Established date

September, 29 1973



Main campus total area(m²)

673,832

Mea Sot campus total area (m²)

960,000



Number of Students in 2022

5,897

Number of Female students

4,017

Number of Female freshmen

1,161



Number of Graduates in 2022

1,680

Number of Female graduated

1,216

Number of Teaching qualification graduates

932

Number of Art, Humanities and Social Sciences graduates

468



Number of Academic and administrative staff

747

Number of Female academics

199

Number of Female staff

243



Kamphaeng Phet Rajabhat University 2022 SDGs annual report

This report summarizes policies, projects, and activities that the university has undertaken to meet the United Nation's Sustainability Development Goals (SDGs) in the fiscal year of 2022.

During this year, KPRU emphasised on working with the students, faculties, and staff in order to publish and move towards the goals together as well as reach Top 100 THE Impact Rankings goals within the year of 2030.

Executive Editor

Asst. Prof. Preeyanuch Prompasit, Ph.D.
(President)

Asst. Prof. Takaporn Sukkaseam, Ph.D.

(Assistance to the President for Corporate Development and Special Affairs)

Asst. Prof. Kamonwat Phuwichit, Ph.D.

(Dean, Faculty of Humanities and Social Sciences)

Editor

Anucha Puangpaka

(Vice Director , The Office Of Academic Resource Information And Technology)

Rattiyaporn Rodtaphao

Palita Boontakosom (GA officer)



Kamphaeng Phet Rajabhat University (KPRU) is ranked in THE Impact Ranking 2023 for the second year as follows;



Overall ranking

1001+



Thailand

38 out of 65



Rajabhat Universities

12 out of 32



601-800 overall

36 of Thailand

19 of Rajabhat Universities



601-800 overall

27 of Thailand

12 of Rajabhat Universities



401-600 overall

18 of Thailand

4 of Rajabhat Universities



601-800 overall

20 of Thailand

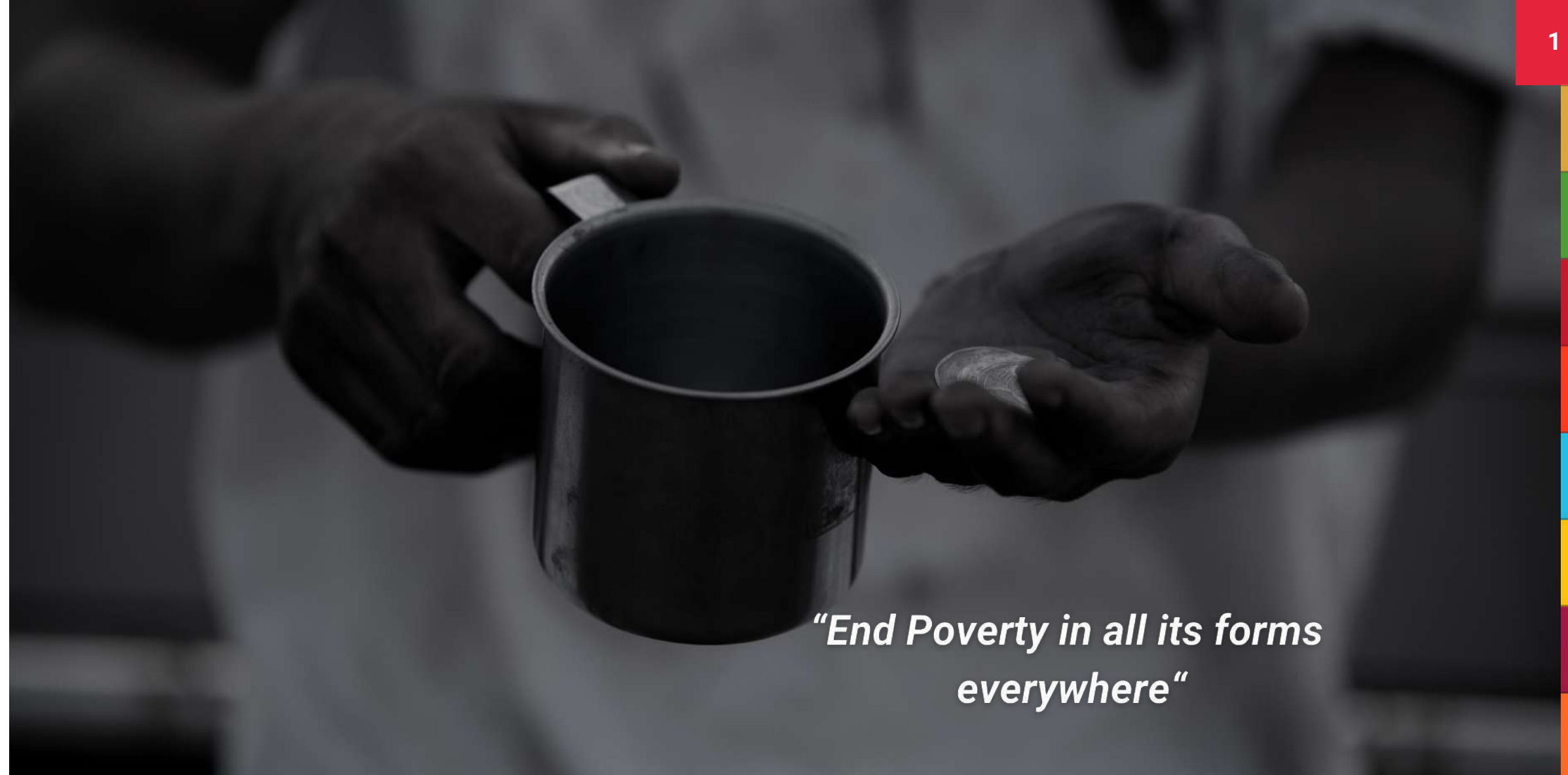
6 of Rajabhat Universities



601-800 overall

28 of Thailand

10 of Rajabhat Universities



“End Poverty in all its forms everywhere”

BCG Activities to Income Raising

Kamphaeng Phet Rajabhat University, together with Thap Nakhon Subdistrict Municipality, has worked on improving life quality of people in the area for two consecutive years, from 2021-2022. The project follows sustainable development concept using Bio-economy, circular economy and Green-economy (BCG Model) as its working framework. Several operations and activities are included in the project.

An examples is a project for generating more income into the grassroot people by uplifting the standard of the local goods and services via the KPRU Market Place programme and U2T's first and second phase, promoting agricultural tourism by making a tourism route, upgrading the communities' tourism goods and services, creating more tourist activities, upgrading tourism industry and Health Safety Standards Assessment (SHA), making Fertilizer for self-use. From such operations, the Thap Nakhon Subdistrict community has created income distribution within the community and has become a learning center for other communities.

Student Scholarships

Following the COVID-19 outbreak, many families have experiences impoverishment. This affects some of our student's enrollment to the university. Therefore, the university offers different forms of scholarship to students from low-income families to help them concentrate on their studies without having to work part-time.

In 2022, 220 students received scholarship worth over 500,000 bath (14,000 USD) from 16 organizations such as The SET Foundation, PTT Exploration and Production Public Company Limited, S1 project, and Her Royal Highness Princess Sirivannavari Nariratana Rajakanya Art Scholarship. The university also facilitate our students to loan Student Loan Fund.

Student Dormitory

In order to support students facing difficult situations that could affect the study, the university has announced the policy to support low-income students whose families were classified as poor following the government's criteria. It provides the students with affordable accommodations and facilities on campus especially for freshmen and sophomores in order to reduce their parents' expenses and enable them to pursue their education.

KPRU Food and Drink Center

KPRU Food Center offers variety of choices of healthy, fresh, and low priced food for all. The 20 food and drink boots in the food center open early in the morning and close in the afternoon. This ensures that students, staff, and people outside the university can have a good breakfast and lunch. The ingredients are from reliable suppliers mostly local farms within the province. The sellers at the university food court strictly adhere to the food sanitary guidelines whether it is the cooking, storing, or serving of food. This is to ensure that the customers can get a good quality meal.

Study Program

In 2021, the department of Food Science, Faculty of Science and Technology opened its latest study program: B.Sc. (Food Innovation and Business) which was then B.Sc. (Food Science and Technology). The subject provides the students with knowledge, and skills necessary in food industry and food technologies. The curriculum requires the students to study food chemistry, food analysis, food safety, food processing and preservation technology, and the application of biotechnology to the food industry and health diet.

2 ZERO HUNGER



FOSIC Public Service

KPRU's Food Safety and Inspection Service Center (FOSIC) is established with the aim of providing both local and general public with quality food inspection services to ensure food safety. FOSIC also attempts to empower the public with food safety standard and serve the needs of society regarding the certification of food products standard.

The center, in 2022, helped inspect over 180 samples from local enterprises and helped them establish food safety and sustainable development through knowledge, skills, and problem solutions.

“End hunger, achieve food security and improved nutrition and promote sustainable agriculture”

A Model practice for Sufficiency and Sustainability life

KPRU has the main goal of uplifting the quality of life of the local people. The project “Improving the Quality of Life and Promoting Income for People in the Grassroot Community” is conducted by every faculty in the university. On June 3, 2022, a workshop on building a model practice for sufficient and sustainable life was organized at KPRU's Learning center in Smart Energy and Innovation business to share knowledge from successful enterprises.

This activity consisted of 5 learning bases as follows;

1. Alternative energy for agriculture
2. Household garden for sufficient life
3. Mushroom farm for extra income
4. Cost reduction and agriculture productivity
5. Vegetable farm for extra income.

200 participants from the Farmer Rehabilitation and Development Fund of Kamphaeng Phet (knowledge expanded group) took part in these 5 learning bases for 4 days and learned from 5 developed enterprise leaders.





“Ensure healthy lives and promote well-being for all at all ages”

KPRU Say No Aids

Having been aware of the importance of all-round knowledge such as sexual relations, and various infectious diseases, Kamphaeng Phet Rajabhat University, in collaboration with Kamphaeng Phet Hospital, organized an activity to provide sex education, self-protection and safe behaviour from sexually transmitted diseases, including AIDS. On the World AIDS Day, around 1,300 freshmen attended this activity. This activity creates values for having sex that is responsible for oneself and society.

Sport Facilities

KPRU provides sports facilities and services. The university staff, students, and people from outside can gain access a gym, sport courts, a swimming pool, indoor and outdoor stadiums, as well as running tracks. Additionally, health professionals and specialists are available to guide and assist anyone who desires to improve their well-being or attends personal training. Our facilities are available with reasonable prices. Exercise spaces outdoor are available free of charge.

Study Program

Bachelor of Science in Public Health program teaches courses that produce quality graduates with good moral and professional ethnics who, most importantly, meet community needs. Upon their graduation, our students will possess knowledge and skills in health promotion, disease prevention and control, initial assessment and treatment for the patient rehabilitation, occupational health and environment health programs, and public health issues.

In addition to the Public Health program, KPRU also offers a Bachelor of Nursing. This course has been developed in response to the shortage of professional nurses in the Thai health care system. Within the area of Kamphaeng Phet, Tak, Sukhothai, and Phichit provinces, there is no nurse producing institutions. This causes a severe shortage of professional nurses and a lack of continuity in local community health development. The graduates in nursing can work both in healthcare facilities and in the community.





“Ensure inclusive and equitable quality education and promote lifelong learning opportunities for all”

E-Services for LifeLong Learning

Through the Center for Academic Resources and Information Technology, the university provides access to information and learning resources either on-site or online in the form of e-services. Via the website <https://arit.kpru.ac.th/ap/app/>, the university staff, students, and public can access database of books, digital media, research, local area information, and other necessary information for the local development. Recently, importantly, the university offers learning resources in the form of MOOCs. This is made available through the web <https://arit.kpru.ac.th/ap/app/>. The university also makes the e-office services available for students, staff, and lecturers on the website <https://www.kpru.ac.th/th/information-service-online/> which simplify their work and learn.

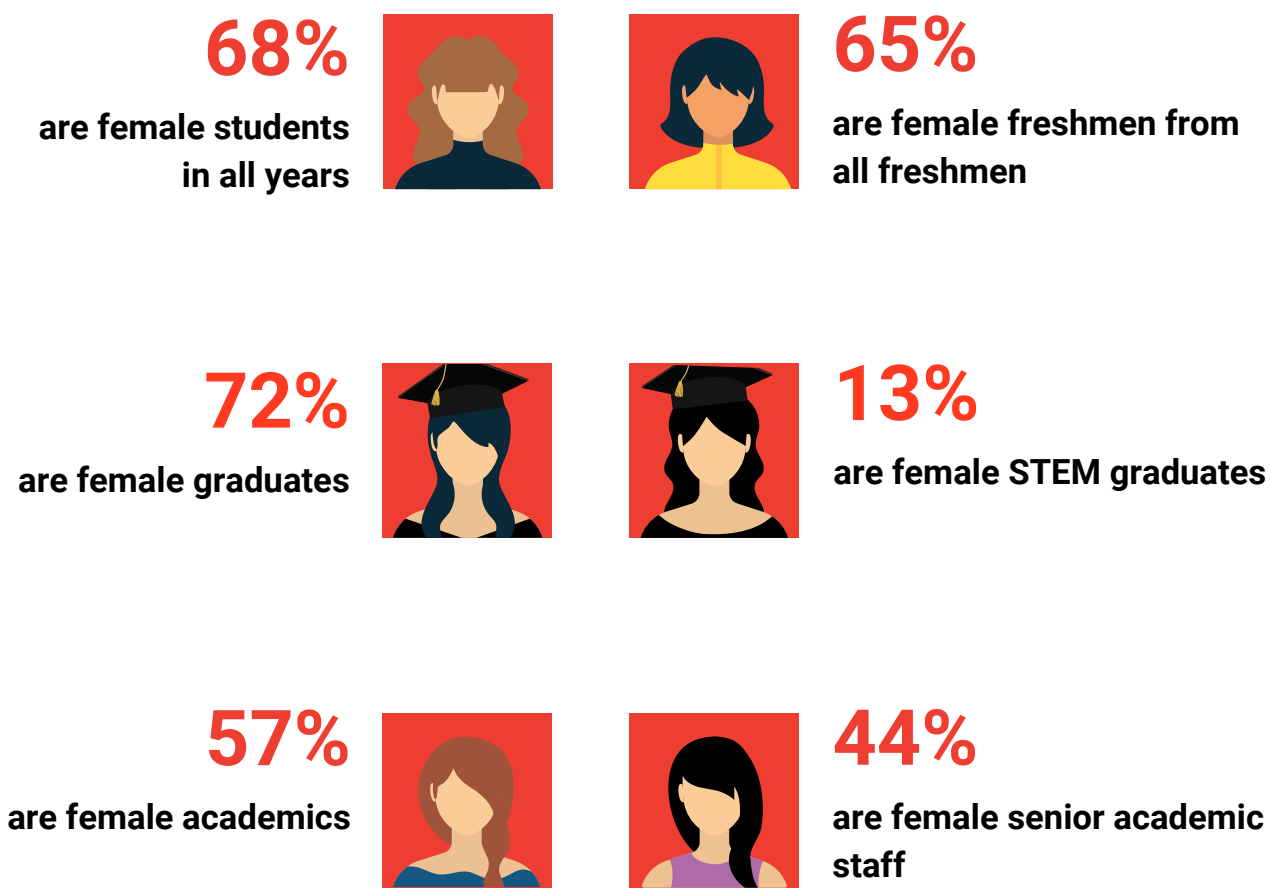
KPRU Skill Standard Testing Center

The university's Skill Standard Testing Center is certified by the Skill Development Department, Ministry of Labor, in organizing training and testing of labour skills in various fields. People are tested their knowledge, abilities, and working attitudes of professionals according to the criteria specified by the National Skill Standards. Those who pass the evaluation will receive a National Skills Standards Test certificate for their skills approval.

In collaboration with the Department of Skill Development and Kamphaeng Phet Skill Development Office, in the fiscal year 2022, the university has organized two workshops to prepare for the skill standard test in the field of electrician level 1. The workshops aimed to develop the skills of interested people, encourage students and the general public to take the workforce skill standard test according to workforce skill standards set by the Department of Skill Development. There were 26 participants for workshops, however, nineteen of them were awarded with workforce skill standard certificates which enabled them to find jobs and support their families financially.



“Achieve gender equality and empower all women and girls”



At KPRU, we place a strong emphasis on non-discrimination of genders and ages. We are committed to promoting gender equality and creating a safe space for all. We respect the diversity of genders. Our students are free to express the sex of their choice; they, for example, are free to wear the university uniform according to their desired gender.

All genders have a place in academic, social, and management, especially women. In the Student Administration Organization, there are male, female, and LGBTQ who work closely and happily together to run the university extra curricular activities. The same nature can be seen among the teachers and staff. At the moment, KPRU president is a female and many more important managerial positions are filled by women.

Maternity & Paternity Leave

The university places a strong emphasis on women in childbirth. The university has set the guideline for maternity leave for female and paternity leave for male employees as follow:

Females can take maternity leave for 90 days, 45 days paid by the university and another 45 days paid by the Social Security Office.

Males can take 15 days of paternity leave with full pay to take care of their wife.

(part of the university’s announcement on May 17, 2012)

“Ensure availability and sustainable management of water and sanitation for all”

6



Wastewater Treatment Measure

The Office of the President issues waste management measures which entail actions for waste management within buildings and across universities.

The green area covers approximately 18% of the university's total area meaning that the university must use a lot of water to feed the plants. A portion of water used for this is treated water from buildings. Over 50% of wastewater is recycled on campus. The wastewater treatment system is regularly maintained to ensure it functions properly, and water quality is routinely checked.

Free Drinking water

Kamphaeng Phet Rajabhat University provides free drinking water for staff and students. Water purifier machines are installed at the university's main buildings. This service ensures that the students and university staff can have free drinkable water which helps reduce the costs of living.



“Ensure access to affordable, reliable, sustainable and modern energy for all”

Energy Center for Energy Models

Smart Energy Learning Center and Innovative Business for the Community Center has the core mission of providing the community with academic services regarding renewable energy. As a model learning center on renewable energy, smart agriculture, energy and environment development, on June 28, 2022, the center welcomed a group of students of Ang Thong Pattana School, Khlong Mae Lai Subdistrict, Kamphaeng Phet. The students attended seven learning bases: solar water pumping system, off-grid energy management system, trading electricity between buildings, smart farming, solar-powered drying chamber, and electric vehicle.

Later, on July 7, 2022, the centre served as a mentor in creating Ang Thong Pattana School to be a source of learning about the sufficiency economy. The center shared the knowledge of a solar water pump, a portable solar energy kit system, and a system for watering mushroom plants via mobile phones (Smart Farm). These were built in the school as the demonstration center for the students.

The Policy towards Energy Efficiency

In order to minimize energy consumption, KPRU has established the following energy and resources measure: adjusting the air conditioner to 25-28 degrees Celsius from 9 - 11.30 am. and 1-3.30 pm., regularly maintaining the LED light bulbs or opening the curtain to let the natural light, unplugging the computer and other electronic machine cables at the end of the day, promoting the use of stairs instead of elevators, and working in the office no later than 8 pm. (part of the university's announcement on February 21, 2022)

Study program

The Bachelor of Technology Program in Energy Technology (Faculty of Industrial Technology) has the aim of producing graduates who are expertized in energy technology. They are equipped with knowledge of energy management, energy conservation, and many kinds of energy technology, such as biomass, solar, wind and biofuels.

The graduates can apply their energy management knowledge to agriculture and to environmental management. After graduation, most of them are employed in the energy industrial sector as researchers or officers in energy, energy development officer, and energy auditor and analyst.



“Promote sustained, inclusive and sustainable economic growth, full and productive employment and decent work for all”

**Human Resources Management Policy of KPRU
for the Fiscal Year 2022**

Kamphaeng Phet Rajabhat University places importance on the administrative system and the development of its personnel. Staff competencies, professional standards, welfare, and progress are addressed in The 2022 Human Resources Management policy which says that the university will seek to:

1. Develop human resource management system to align with the university’s vision, mission, and core values so that the university is able to manage the personnel effectively whether it is recruitment, performance evaluation and promotion, wages, and welfare. All of these must be systematically planned for both the long and short terms,

2. Ensure a corruption-free recruitment process that can screen individuals with knowledge, attitude, and determination,

3. Plan and support the professional development, ensuring that the staff acquire the necessary knowledge, competence, and suitability for their positions,

4. Conduct the evaluation of personnel performance using fair method,

5. Organize an efficient and reasonable system of compensation benefits and appropriate welfare arrangements to enhance the life quality for personnel,

6. Create understanding among personnel regarding rules, regulations and other legal matters related pertaining to management and personnel development to prevent misconduct,

7. Conduct audits, disciplinary actions in legally fair manners to prevent the use of personal bias in decision-making and ensure fairness to all parties.

(part of the university’s announcement on February 25, 2022)

KPRU Idea to Start-up 2022

Although students who are not in the field of entrepreneurship are mostly technologically proficient, they still lack knowledge in business such as business design, marketing, transaction, accounting, legal affairs, and personnel matters. Realizing the importance of business development that will turn the students into Start-ups, Kamphaeng Phet Rajabhat University runs the Accelerator Program aiming at transferring knowledge and creating standards for granting fund to the Start-ups in the Pre-Seed stage. This helps create innovative businesses that are strong and able to grow through Entrepreneurship development Under the mentoring system.

The KPRU Idea To Start-up 2022 workshop was organized by Business Incubation Center to develop the student's entrepreneur potential, create start-up motivation so that students can apply business ideas to design a business. The workshop also served as a platform for the participants to share business thoughts and enter into a business idea competition at the national level.

Study Program

In 2021, the department of Business Administration designed a new curriculum "Entrepreneurial Management". The new discipline is available and perfect for anyone with ambition and motivation to own a business and become a novel successful entrepreneur in the future.

The program focuses on the subjects that will shape up the students to become a potential entrepreneur such as prototype business, good entrepreneur and entrepreneurship, new product development, digital marketing, tax planning, financial feasibility analysis. The students will have the opportunity to express their creativity with their business ideas and study with experts and experienced business people, along with specialized mentors as advisors who can advise from starting a business until it is successful.



“Build resilient infrastructure, promote inclusive and sustainable industrialization and foster innovation”





“Reduce inequality within and among countries”



Inequalities come in many forms. The most obvious ones are gender, physical, and educational. KPRU has promised to end the gender inequalities gap through a lot of practice. The university sets no restrictions on access to its facilities, participation in any activities, and the right of voting or for being voted. Concerning the economic gap, the university has provided a wide variety of projects and activities to allow people to have more competitiveness so that they can close the gap of income.

Disable Staff and Students

KPRU has set an excellence example by employing personnel who have physical disorders. We also recruit students with disabilities to study in normal and specially equipped classes. In order to combat educational inequality, KPRU has given the locals opportunities to acquire education both on and off-campus with low costs and without charge.

Disable Facilities Support

Apart from providing disable people with opportunity to access the university, KPRU has realized to facilitate the transportation and way of living. We built the special facilities such as restrooms in almost every building, pathway, building entrance way, and connecting dome between each building.

Special Education Research & Development Center

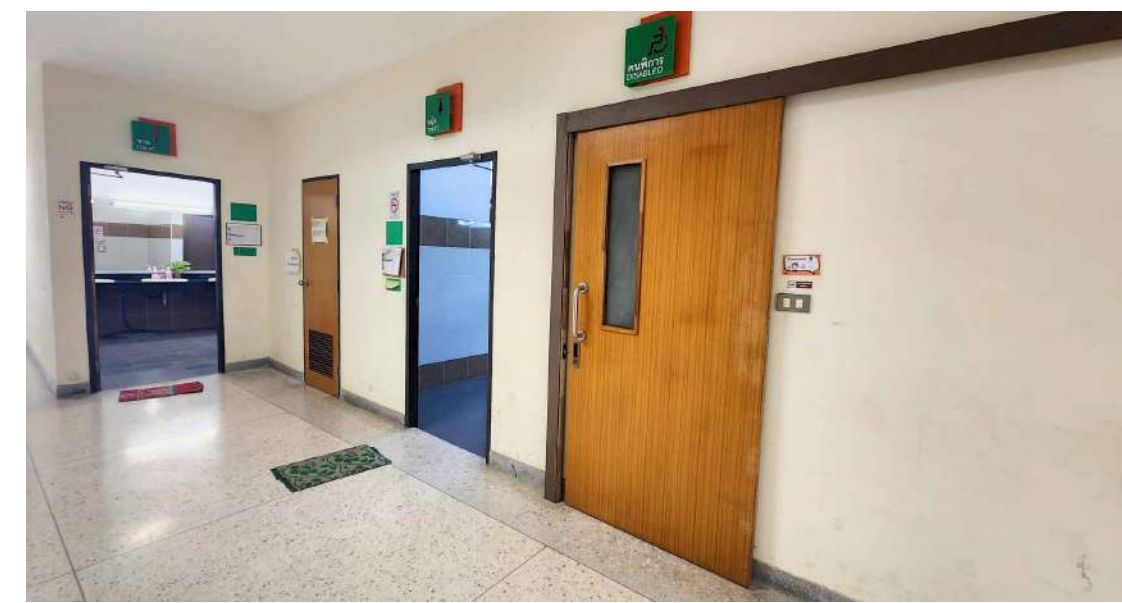
Providing education for children with disabilities relies on personnel who are knowledgeable and understand the specific needs. However, the personnel responsible for their care still need to enhance their knowledge and experience in teaching and learning for disabled children.

The Special Education Research and Development Center, Faculty of Education, organized training workshops on Writing an Individual Education Plan (IEP) for 25 teachers in Kamphaeng Phet Primary Education Service Area 1 on December 25, 2021, and for 30 teachers in Kamphaeng Phet Primary Education Service Area 2 on March 26, 2022. The results showed an improvement of 83% in the children’s performance.

Taokham - Charcoal from Mae Tao

KPRU Mae Sot campus is tasked with participating in the Integrated Sub-district Economic and Social Upliftment project (University to Tambon: U2T), with the objectives of generating income, promoting environmental development in the community, developing career and community products.

In Mae Tao, there is a group of disabled people, disabled caregivers, and the elderly, who gather to sell compressed charcoal briquettes. However, the process of manufacturing these charcoal briquettes results in charcoal scraps, which are hard to eliminate. Subsequently, the university appointed two project advisors to lead the development initiatives and recruited recent graduates and residents from Mae Tao sub-district to address the waste management issues and develop products under the BCG framework. This team collaborated with the disabled group to create the odour-absorbing charcoal product from the charcoal scraps under the brand ‘Taokham’. This product has increased the income of the group members by 10% each month.





“Make cities and human settlements inclusive, safe, resilient and sustainable”



Art Performance on Tradition Festival

Kamphaeng Phet Province has many important cultural festivals annually; the very well-known one is the Sart Thai Kluai Khai (the festival when the local people make Krayasart dessert which perfectly matches with golden banana or Kluai Kai). During the ten-day celebration and fair, products and services made out of local wisdoms, local performing arts, are put on display and show. The university plays a big part in the whole event. The staff from the Department of Arts and Cultures take a leading role in organizing the grand opening ceremonies which is filled with traditional dances, and entertaining folk singing and folk dancing, parades showing beautiful cultures and ways of life of people now and in the past, which is televised and live. Students from the university take part as dancers, and performers. In addition to Sart Thai Kluai Khai, Nop Pra Len Pleng is another big cultural event held annually in Kamphaeng Phet. Similar roles are played by staff and students of the university.

TimeKPRU

A system called TimeKPRU has been developed to make the signing in and out of work more convenient and with less time consumed for the staff. By using mobile phone to clock in online instead of signing in a book or scanning fingerprints, this new system allows the staff to sign in and out from anywhere inside the university premise. This helps save time, energy, and money. Apart from making the signing in and out easier, the university has adopted e-office system to operate its administrative correspondence. The arrival of this new office operation has made it much more convenient for the staff and students to deal with each other without having to use paper, to see each other in person, to wait for the paper to be processed, and to waste time and energy. The university has e-systems which cover nearly all the 5 areas of the university missions which include 42 systems for teaching, 27 systems for administration, 15 systems for research, 9 systems for academic services, 4 systems for arts and cultures conservation, and 15 systems for miscellaneous activities.

Agritech and Innovation Center : AIC

With the determination to make the most of the land, the university has established the Agricultural Technology and Innovation Center (AIC) in the watershed area. This area in the past was flooded and deserted. Later in 2020, the ground was filled in to prevent flooding, and the area has been arranged as an agricultural demonstration plots, a learning centre, and a collection centre for agricultural technology and innovation, including an incubator for Smart Farmers and Young Smart Famers.

“Ensure sustainable consumption and production patterns”



Waste Disposal

The university by the General Administrative office has a measure to sort the waste and track the amount of waste generated across the university since 2017. Sorting bins were prepared with outstanding directions and color in order to enhance the most accuracy of waste disposal before sorting out. Paper, plastics, cartridges, glasses, aluminum, food waste and hazardous waste sorted from the trash cans were track in kilograms.

In 2022, around 3 tons of recycling waste were sent to local department to further recycle, and 2 tons of organic waste was fermented to be the fertilizer and used in the university. For hazardous and infectious waste were send to the private sectors to further eliminate.

Fertilizer from Waste

The General Administrative Office, the main driving department of the Green Office project and Green University, has a water treatment project and uses it in the university. However, the water from canals has a smell from the weeds and dry leaves, which need to be cleaned out. After arranging the activity on KPRU Water Resource Development Day on December 7, 2022, the GA office obtained a lot of water hyacinths and dry leaves. Instead of leaving it to decompose naturally, the office organized a continuing training activity on organic fertilizer compost from leaves, weeds, and food waste with the main aim of recycling and adding value to the organic waste and using it on campus. The activity follows the policy of restoring natural resources and increasing the efficiency of resource use based on the philosophy of the economy. Two hundreds people on campus participated in the activity.

Green Office Policy

The university has implemented the Green Office since 2018 with the Academic and Administrative Building (Building 14) as its first department to the green office model. Many policies and measurements have been created to push forward environmentally friendly workplace, including environmentally friendly procurement policy. Concerning the policy, the university has established the procurement committee to persuade KPRU people to reconsider using environmentally friendly products.

Therefore, KPRU set the guidelines for product procurement that reduce the environmental impact. To achieve the goal, KPRU will carefully consider every stage of procurement to ensure that the products and services are derived from environmentally friendly processes. KPRU will update the product and service list continually and suitably for the operation. (part of the university's announcement on March 15, 2018)



“Take urgent action to combat climate change and its impacts”

13 CLIMATE ACTION



KPRU Tree Planting on National Tree Day

KPRU recognizes the importance of conserving and restoring the green areas on campus. As the department responsible for Green Office project, the bureau of General Affairs, the office of the President, ran a campaign to grow over 50 trees at every building in the university on National Tree Day which falls on January 31. The green office policy and regulations cultivate an awareness among the staff and students that normal working activities can affect climate change from the consumption of power and energy, and that planting trees can help reduce Greenhouse Gas and absorb carbon dioxide.

Environment Management Policy

Kamphaeng Phet Rajabhat University is committed to becoming an environmentally friendly university that supports student learning and sets a good example for others to follow. To achieve the goal, the university makes a policy on environmental management.

The policy intends to promote and support the management of all the university units as they are working towards the goal, preserve natural areas, restore degraded areas, develop ecosystems and biodiversity, and treat wastewater. In addition to environmental management, a campaign to reduce greenhouse gas emissions is implemented to carbon-neutral university.



“Conserve and sustainably use the oceans, seas and marine resources for sustainable development”

KPRU Water Resource Development Day

Over 40 percent of the university’s area is used as water storage. This provides the university as well as the neighboring community with water security. To maintain the water quality so that it can give a good home to marine animals and plants, water pressure generators are installed to make the water circulation and add oxygen. The water storage area is taken care of by the university field staff who are assigned a portion of area to look after. Every Wednesday, the university’s field staff from all departments participate in the big cleaning Wednesday.

On December 7, 2022, the General Affairs office organized the activity "Water Source Development and World Soil Day" to build awareness of environment care and promote the participation from personnel, students, and people living around the university in water conservation and community’s water resource development and management. Approximately 400 staff, students from Environment Conservation Club, inmates from Kamphaeng Phet Central Prison, and villagers from Ban Wang Yang participated to eliminate the aquatic weeds and clear the dry leaves from the water sources. These leaves will be collected to create the natural fertilizer.

“Protect, restore and promote sustainable use of terrestrial ecosystems, sustainably manage forests, combat desertification, and halt and reverse land degradation and halt biodiversity loss”

Water Storage Dams for Sustainable Ecosystems

The university emphasizes the conservation of the environment and the maintenance of the ecosystem. Khlong Lan is the university's target area for environmental conservation and environmentally friendly tourism.

On July 23, 2022, the university together with the Khlong Nam Lai Subdistrict Administrative Organization, and Khlong Nam Lai Reservoir Tourism Community Enterprise Group conducted a survey on plant species and ecosystems at Ban Samakkhitham Community Forest, located in Khlong Nam Lai sub-district, Khlong Lan district, Kamphaeng Phet. This initiative aims to make a database of the local flora to support the development of natural study routes connecting Khlong Nam Lai Reservoir to Ban Pakakayo Raw Water Reservoir which would foster community tourism. In addition to the survey, a water-slowing has been constructed.

Another target area is Khao Krok Pla Kang, Ban Khlong Luek, Songtham sub-district, and Mueang District, Kamphaeng Phet. The community faces the problem of forest deterioration caused by the expansion of farmland. The problem has led to deforestation, forest fires, and landslides. The deterioration in soil quality and decrease in the fertility, results in poor water absorption ability. Shortage of water is another consequence of deforestation. To prevent the situation from getting worse and restore the balance to the environment, community leaders and villagers get together to construct additional water storage dams. Given the vast expanse of the forest, faculty and students of the Finance and Accounting programs in collaborative with the people of Ban Thung Suan, Nakhon Chum Subdistrict, partnered with external agencies, consisting of the Internal Security Operations Command (ISOC), the Royal Thai Army, Task Force 35, and the Royal Thai Army 35, to jointly construct a water storage dam on May 11, 2022.



“Promote peaceful and inclusive societies for sustainable development, provide access to justice for all and build effective, accountable and inclusive institutions at all levels”



Student Union

Kamphaeng Phet Rajabhat University offers students the opportunity to govern themselves under a democratic system with the King as Head of State by organizing recruitment for the student union president, the supreme leader elected by all students on the campus. This position is in charge of managing the operations of the student union and student activities under the supervision of the Student Development Division. The candidate who is selected for the President of the Student Union will need to appoint a team for each department to propose a list of names for the establishment of the Student Union.

KPRU's Council Recruitment

KPRU operates under a democratic system that includes participation from all sectors, including executives, faculty, staff, and outside experts. Candidates for important university positions are chosen and recruited democratically at all levels of the university, from faculty to university level.

Kamphaeng Phet Rajabhat University Council has issued regulations regarding qualifications, criteria, and methods of acquiring suitable persons for the position of qualified university councilors.

Eligible candidates for this position must not be university personnel and have the following qualifications:

1. Possess academic or professional expertise in the subjects required to support the university's goals.
2. Be accepted by society, possess morals and ethics, and uphold morality.
3. Acknowledge the significance of higher education management for the growth of the nation and the community, give attention and cooperation as well as support and promote the expansion of educational opportunities to the local area.
4. Be able to devote time to the university as necessary and appropriate.

To acquire suitable persons for the position of qualified university councilors, the University Committee, chaired by the university president, together with the members and secretary who are the representatives of vice presidents, deans, and directors or heads of government sectors, chairpersons of faculty members and government officials, and members of the University Council, will be jointly selecting the candidate who offers the most potential.

(announcement on January 31, 2019)





“Strengthen the means of implementation and revitalize the Global Partnership for Sustainable Development”

Study Program

All of the university courses are designed to equip students with the knowledge and abilities they need to lead sustainable lives. For undergraduate programs, students will learn at least 120 credits, or around 40 subjects to graduate (with one subject equaling 3 credits). The general education credits make up of 30 of the 120 total credits. This includes topics including His Majesty the King’s Sufficiency Economy, Human behavior and self development, Digital literacy, and Fundamental English. The student’s competitiveness will be enhanced as a result of another 90 credits.

Networks

A memorandum of understanding is signed between the university, 17 chambers of commerce from the northern provinces, and 14 Northern Science Park Network universities. The agreement allows the parties to share the use of research, technology and innovation to support the development of the area under their responsibility.





KAMPHAENG PHET RAJABHAT UNIVERSITY
69 M.1 NAKORN CHUM,
MUANG, KAMPHAENG PHET,
62000, THAILAND

www.kpru.ac.th

SUSTAINABLE
DEVELOPMENT
GOALS